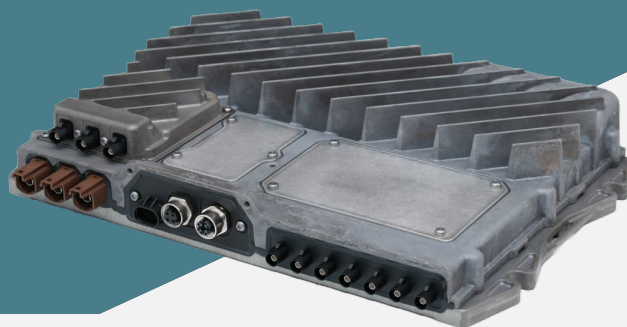


HYDRA

CPAC Productivity Hub



NEXT-GEN

Integration Experience

The CPAC Productivity Hub is an automotive and marine grade ECU with a powerful processor, decoupled processing strategy, and impressive features. The Hub is a central part of CPAC's next-generation productivity platform and sports a wide range of communication interfaces such as CAN (and CAN FD with support for NMEA2000), LIN, Ethernet, Wi-Fi and Bluetooth 5.0 as standard. The flexible backpack system allows for expandable functionality with optional battery and connectivity modules. The Hub supports a wide range of peripheral equipment, like multiple touch displays, camera inputs, and antennas, all of which can be supplied by CPAC Systems. With the choice of either infotainment capabilities (Radio, Microphone inputs, integrated amplifier) or analogue interfaces it can act as the central node of any HMI system.

CPAC's Productivity Hub is designed and tested to withstand harsh conditions, and fulfills automotive requirements. The fanless design allows for great installation flexibility. CPAC's productivity platform is expandable with a wide range of products in CPAC's Product portfolio with Touch Screens, Cameras, Thermal imaging, I/O modules, RTK/GNSS positioning, Inertial Measurement Units and more. CPAC's Productivity Platform is currently homologated in EU and North America, with Latin America, Oceania and Japan upcoming.

FEATURES

- Multiple communications interfaces
- Optional backpacks for expandable functionality
- Infotainment capabilities or analogue interfaces
- Multiple Camera support
- Touch screen support
- Robust enclosure
- Supports 12V and 24V systems

CPAC SYSTEMS AB

Box 217 • 401 23 Göteborg, Sweden • Phone +46 (0)31 352 16 00
info@cpacsystems.se • www.cpacsystems.se

v.1

SUBJECT TO CHANGE WITHOUT NOTICE

HYDRA

Productivity Hub

SPECIFICATIONS

The Hub is available in two different configurations: **Deep Integration** or **Infotainment**. Both configurations can be equipped with optional backpack modules for Satellite communication, LTE & GPS, and a battery low-power mode.

3× PROCESSOR AUTOMOTIVE SYSTEM

CPU & GPU / *Powerful graphics & Connectivity*

- › Qualcomm Snapdragon SA8155P Android Processor
- › 64-bit Kryo octa-core system based on ARMv8
- › Custom Qualcomm Adreno Generation 6 GPU
- › Automotive Grade-3 Thermals

Dedicated NXP CPU / *Reliable vehicle interface*

- › NXP 5764

Dedicated Low Power Mode CPU / *Telematics & Anti-theft*

- › STM32

GENERAL SPECIFICATIONS

Power

Supply voltage	9-32VDC
Rated current 12V/24V	10A/5A
With amplifier 12V/24V	15A/10A
Battery (Low-Power)	Backpack option

Environmental

Operating temperature	-40°C ≤ T ≤ 85°C
Cooling	Fanless design
Enclosure protection	IP64

Connectors

Supersal	34 & 26 PIN
FAKRA (Cameras)	4× GMSL2
FAKRA (Antennas)	6×
USB-C	DP Alt Mode
HSAL-2 (FHD Displays)	2× FPD-Link, 2× USB 3

Physical

Dimensions (W × D × H)	350 × 70 × 300mm
Weight	2.5kg < W < 3kg

Vehicle Interfaces

BroadR-Reach HSD	3× 100BASE-T1
CAN ISO & FD	4×
CAN ISO & FD isolated	2× (NMEA2000)
LIN	2×

Network

Ethernet M12 D	1× 100BASE-TX
Ethernet M12 X	1× 1000BASE-TX
WiFi	802.11b/g/n
Bluetooth	5.0

CONFIGURATIONS

DEEP INTEGRATION

Relay driver	2×
Button inputs	4×
Throttle inputs	2× with 5V supply
Fuel level inputs	2×

INFOTAINMENT

Amplifier 12/24V	4× 20W
Line out	2 Channel DAC
Radio tuner	FM/AM/DAB
Audio input	2× Microphone, 1× AUX, USB
Bluetooth hands-free	Echo cancelling & noise reduction

SYSTEM DETAILS

OPERATING SYSTEM

Android Automotive	12.1
--------------------	------

MEMORY & STORAGE

RAM	6 GB
Internal storage	32 GB

HYDRA

Productivity Hub

SPECIFICATIONS

PERIPHERALS

Displays / 2x FPD-Link

Display size	12.8"
Active area	283 x 159 mm
Resolution	1920 x 1080 at 60Hz
Aspect ratio	16:9
Cover glass	Strengthened AGARAF
Backlight	Auto-adjust white LED
Multi-touch display	Up to 10 points

Displays / 2x USB 3.0 (DP)

Display size	Custom
Resolution	4K

Cameras

Resolution	1280 x 960 / 30fps
Coaxial cable	4x GMSL2

Industrial Antenna Option

- › Roof mounted double shark fin:
 - › 1x LTE
 - › 1x Positioning
 - › 1x WiFi
 - › 1x AM/FM/DAB
- › In-cab/body mount:
 - › 1x WiFi/BT
 - › 1x LTE

Compact Antenna Option

- › 5-in-1 in-cab/body mount:
 - › 2x LTE
 - › 2x WiFi/BT
 - › 1x Positioning

Peripherals are available on demand.

REGULATIONS AND STANDARDS

Road vehicles

ISO 16750-1
 ISO 16750-2:2010
 ISO 16750-3:2007
 ISO 16750-4:2010
 ISO 16750-5:2010

Code letters:

Z-ZS-G-Z-ZD-IP64

Marine vessels

IACS E10
 ISO 25197:2012
 IEC 60945
 ABYC P-27
 ABYC P-24
 ABYC E-11

Vibration

IEC 60068-2-64
 IEC 60068-2-14
 IEC 60068-2-6
 IEC 60060-2-6
 IEC 60068-2-27

EMC

ISO 13766-1:2018
 ISO 25197
 IEC 60945
 UN ERE R10
 RED 2014/53/EU

Installation guidelines upon request.

OPTIONAL MODULES

SATELLITE BACKPACK

Modem ———— Orbcomm Q1000

LTE CAT 4 & GPS BACKPACK

Sim card slots ———— 2x Micro-SIM
 Compatibility 5G ———— Optional upgrade
 Compatibility 4G ———— LTE/UMTS
 Compatibility 2G/3G ———— GSM/GPRS/EDGE
 Positioning ———— GPS, GLONASS,
 BeiDou/Compass/
 Galileo/QZSS

BATTERY BACKPACK

Low Power Mode ———— Anti-theft

TESTING

All our automotive environment tests are run in sequence to ensure quality and reliability over time.

HOMOLOGATION

Approved ———— CE, FCC, KCC
 Upcoming ———— Anatel, Ramatel,
 Comatel, Sutel,
 Icasa